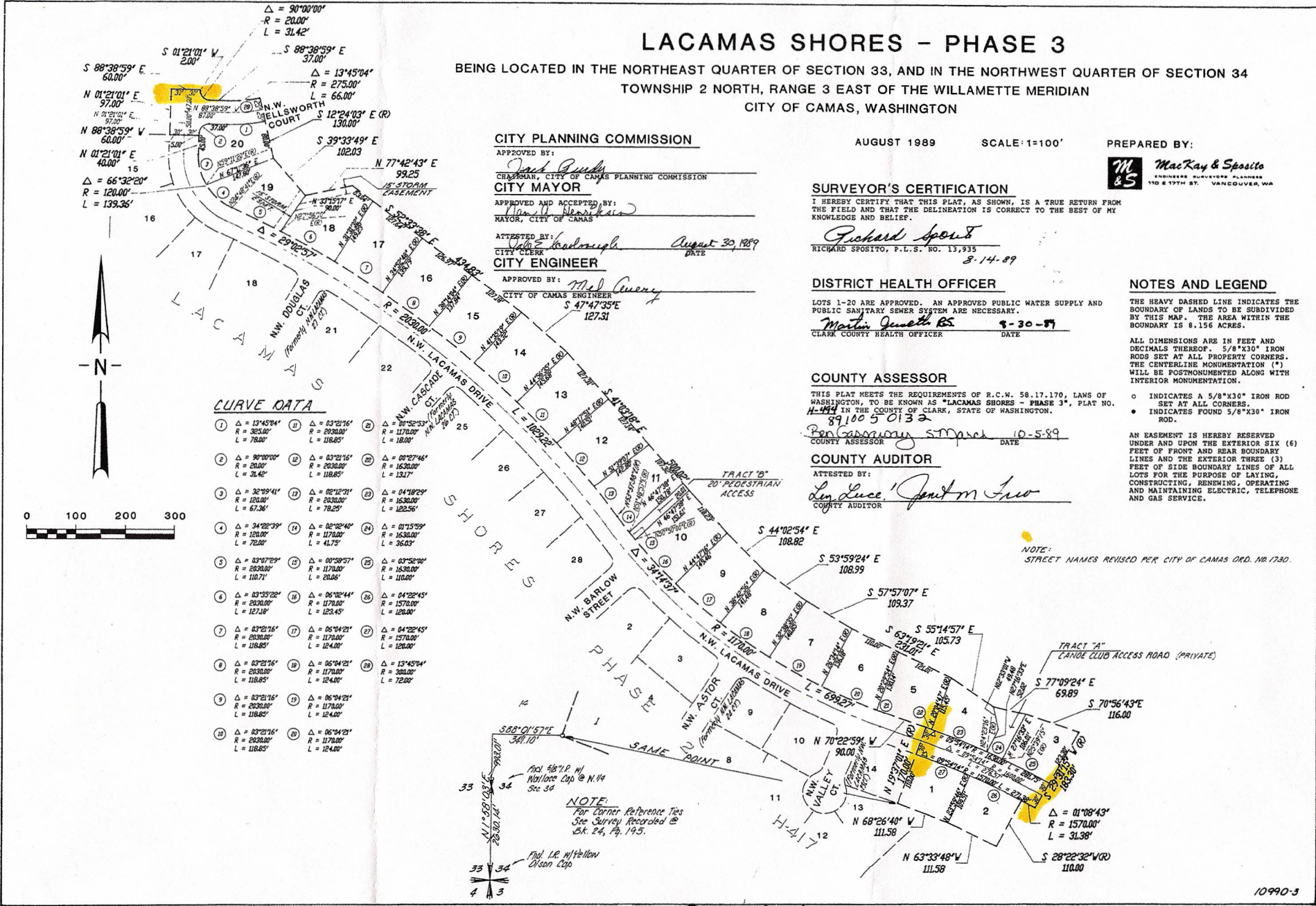


H-494

H-494

# LACAMAS SHORES - PHASE 3

BEING LOCATED IN THE NORTHEAST QUARTER OF SECTION 33, AND IN THE NORTHWEST QUARTER OF SECTION 34  
TOWNSHIP 2 NORTH, RANGE 3 EAST OF THE WILLAMETTE MERIDIAN  
CITY OF CAMAS, WASHINGTON



### CITY PLANNING COMMISSION

APPROVED BY:  
*Jack Rudy*  
CHAIRMAN, CITY OF CAMAS PLANNING COMMISSION  
**CITY MAYOR**

APPROVED AND ACCEPTED BY:  
*Nancy H. Henschen*  
MAYOR, CITY OF CAMAS

ATTESTED BY:  
*John E. Lindorff* August 30, 1989  
CITY CLERK  
**CITY ENGINEER**

APPROVED BY:  
*Med Cheney*  
CITY OF CAMAS ENGINEER  
S 47°47'33" E  
L 127.31

AUGUST 1989

SCALE: 1"=100'

PREPARED BY:



### SURVEYOR'S CERTIFICATION

I HEREBY CERTIFY THAT THIS PLAT, AS SHOWN, IS A TRUE RETURN FROM THE FIELD AND THAT THE DELINEATION IS CORRECT TO THE BEST OF MY KNOWLEDGE AND BELIEF.

*Richard Spicito*  
RICHARD SPOSITO, P.L.S. NO. 13,935  
8-14-89

### DISTRICT HEALTH OFFICER

LOTS 1-20 ARE APPROVED. AN APPROVED PUBLIC WATER SUPPLY AND PUBLIC SANITARY SEWER SYSTEM ARE NECESSARY.

*Martin J. Smith BS* 8-30-89  
CLARK COUNTY HEALTH OFFICER DATE

### NOTES AND LEGEND

THE HEAVY DASHED LINE INDICATES THE BOUNDARY OF LANDS TO BE SUBDIVIDED BY THIS MAP. THE AREA WITHIN THE BOUNDARY IS 0.156 ACRES.

ALL DIMENSIONS ARE IN FEET AND DECIMALS THEREOF. 5/8"x3/32" IRON RODS SET AT ALL PROPERTY CORNERS. THE CENTERLINE MONUMENTATION (\*) WILL BE POSTMONUMENTED ALONG WITH INTERIOR MONUMENTATION.

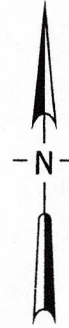
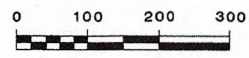
- INDICATES A 5/8"x3/32" IRON ROD SET AT ALL CORNERS.
- INDICATES FOUND 5/8"x3/32" IRON ROD.

AN EASEMENT IS HEREBY RESERVED UNDER AND UPON THE EXTERIOR SIX (6) FEET OF FRONT AND REAR BOUNDARY LINES AND THE EXTERIOR THREE (3) FEET OF SIDE BOUNDARY LINES OF ALL LOTS FOR THE PURPOSE OF LAYING, CONSTRUCTING, REPAIRING, OPERATING AND MAINTAINING ELECTRIC, TELEPHONE AND GAS SERVICE.

NOTE:  
STREET NAMES REVISED PER CITY OF CAMAS ORD. NO. 1730.

### CURVE DATA

1	Δ = 13°45'04"	11	Δ = 03°21'16"	21	Δ = 04°19'29"
2	Δ = 09°00'00"	12	Δ = 03°21'16"	22	Δ = 08°27'46"
3	Δ = 32°09'41"	13	Δ = 02°12'21"	23	Δ = 04°19'29"
4	Δ = 34°22'39"	14	Δ = 02°12'21"	24	Δ = 01°15'59"
5	Δ = 03°07'29"	15	Δ = 01°09'57"	25	Δ = 03°52'00"
6	Δ = 03°33'22"	16	Δ = 06°16'44"	26	Δ = 04°22'45"
7	Δ = 03°21'16"	17	Δ = 06°14'21"	27	Δ = 04°22'45"
8	Δ = 03°21'16"	18	Δ = 06°14'21"	28	Δ = 13°45'04"
9	Δ = 03°21'16"	19	Δ = 06°14'21"	29	Δ = 06°14'21"
10	Δ = 03°21'16"	20	Δ = 06°14'21"	30	Δ = 06°14'21"



NOTE:  
For Corner Reference Ties  
See Survey Recorded @  
SK. 24, Pg. 145.

H-494

H-494